

# Nevada's Family Engagement Guide

## Birth Through Grade 12

2025



*Developed and informed by Nevada  
families, educators, and community members*



Guide



Framework



Toolkit



**NEVADA**  
Department of  
Education

*The Nevada Department of Education does not discriminate on the basis of age, gender, socio-economic status, religion, race, ethnicity, sexual orientation, ability, native language, national origin, or citizenship status.*

# Table of Contents

Family Engagement in Nevada	3
Defining Family Engagement	3
Why Family Engagement Matters	4
The Link Between Family Engagement and School Performance	5
Parental Involvement Versus Family Engagement	6
Strategies to Shift from Parental Involvement to Family Engagement	8
Nevada’s Family Engagement Framework:	9
The Goal of the Framework	9
The Five Foundational Principles	10
Everyone Plays a Role	14
Toolkit	15
The Role of Families and Caregivers in Family Engagement	17
Key Roles of Family Members and Caregivers in Family Engagement	18
Family Engagement Resources for Family Members and Caregivers	23
The Role of Educators and School Staff in Family Engagement	35
Key Roles of Educators and School Staff in Family Engagement	36
Family Engagement Resources for Educators and School Staff	41
The Role of Community and Partner Organizations in Family Engagement	53
Key Roles of Community and Partner Organizations in Family Engagement	54
Family Engagement Resources for Community and Partner Organizations	60
Letter from Nevada State Superintendent of Public Instruction	69
Appendices	70
Glossary	71
Nevada’s Family Engagement Framework Advisory Committee Members	72
2024 Nevada’s Family Engagement Framework Advisory Committee	72
2021 Framework Advisory Committee	74
References	78

# Family Engagement in Nevada

Nevada recognizes that family and community engagement are critical to our students' success. In 2011, legislation was passed that set forth a vision for family engagement. As a result, the Nevada Department of Education Office of Parental Involvement and Family Engagement and the Advisory Council for Family Engagement were created. The Nevada Department of Education Office of Parental Involvement and Family Engagement supports schools and districts in implementing effective family engagement practices, collaborates with the Advisory Council to develop and evaluate policies, coordinates a biennial statewide family engagement summit, and shares best practices and grant information. The Council facilitates parental involvement and family engagement by reviewing state and district policies, collaborating with the Office of Parental Involvement and Family Engagement, and assessing effective practices from other states for statewide implementation. It also evaluates family communication in accountability reports and identifies strategies to engage parents, including those with limited time or English proficiency, while examining how family involvement impacts student performance, attendance, and discipline.

This vision is evident in several statewide initiatives, including Nevada's Statewide Plan for the Improvement of Pupils (STIP), developed by the Nevada Department of Education (NDE) in 2020. The STIP outlines core values that guide all NDE's efforts, with a strong focus on community. This value emphasizes the importance of collaboration among educators, districts, families, stakeholders, and partner agencies to create a high-performing and responsive education system for all Nevadans. Licensed educators play a key role in this collaborative effort, as family engagement is a central element of the Nevada Educator Performance Framework (NEPF), the state's performance evaluation system. Family Engagement is highlighted as Standard 4 in both the teacher and school administrator rubrics, underscoring its critical role in building strong connections between schools and families.

## Defining Family Engagement

Having a common definition for family engagement in Nevada gives everyone a shared understanding of what we mean when we refer to or talk about family engagement. It allows everyone to be on the same page when discussing family engagement and puts us in a better position to make decisions going forward.

During the summer of 2019, the Birth-12 Framework Advisory Committee and NDE engaged hundreds of **stakeholders**<sup>1</sup> to help develop Nevada's definition for family engagement. Over 400 hundred families, educators, and community members shared their thoughts on what family engagement means to them and what words or phrases Nevada's definition should include. The Committee and NDE then took all the feedback and crafted a common statewide definition: family engagement is a shared responsibility between schools, families, and communities where all receive equitable access to tools and supports needed to successfully work together toward the development of children and youth for college, career, and lifelong learning.

In 2024, the Birth Through Grade 12 Family Engagement Framework Advisory Committee, tasked with updating the Nevada's Family Engagement Framework, crafted a revised definition:

***Family engagement is a joint partnership involving families, communities and schools ensuring equitable access to necessary resources for successful collaboration in children's development for education and lifelong learning.***

<sup>1</sup>Stakeholders: anyone who has an interest in the success of a school or school system, including government officials, school board members, administrators, educators, district and school staff, associations, parents and families, and community members

Family engagement is a collaborative effort that brings together families, communities, and schools to create a united support system for children's development and educational success. This partnership goes beyond simply involving parents; it encompasses a comprehensive approach that recognizes the diverse roles that each stakeholder plays in shaping a child's learning experiences. By ensuring equitable access to resources, opportunities, and support, family engagement seeks to bridge gaps that may exist due to socio-economic, cultural, or linguistic differences, empowering all families to actively participate in their children's education.

This partnership still emphasizes the importance of shared responsibility, where families, educators, and community members must work together to create a learning environment that extends beyond the classroom but describing it as a "joint partnership" suggests a more integrated and collaborative approach. The new definition emphasizes unity, teamwork, and working together toward a shared goal and conveys the idea that all parties are equally engaged and invested in supporting a child's success. By fostering open communication, trust, and mutual respect, this approach promotes strategies that address the unique needs of each child, ensuring that every student has the tools and opportunities to succeed in school and in life. Ultimately, family engagement is a cornerstone of lifelong learning, as it lays the foundation for skills and habits that students will carry with them throughout their educational journeys and into their future careers.

## Why Family Engagement Matters

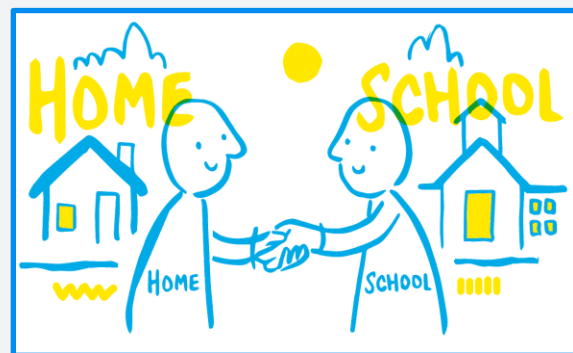
Family engagement is crucial because it fosters a supportive learning environment, enhances student achievement, and strengthens the overall school community. Research has shown that family engagement positively impacts academic achievement, social-emotional development, attendance, behavior, and school-community collaboration, making it a critical factor in education.

1. **Improved Academic Performance:** Research consistently shows that students with engaged families tend to perform better academically. They are more likely to earn higher grades, attend school regularly, and graduate on time. Research by Henderson & Mapp (2002) in [A New Wave of Evidence](#) found that students with engaged families, regardless of their socio-economic status, are more likely to earn higher grades and test scores, enroll in higher-level programs, pass their classes, earn credits, and graduate. Family engagement contributes to higher levels of academic achievement and greater likelihood of pursuing post-secondary education.
2. **Enhanced Social-Emotional Development:** Family engagement contributes to students' social and emotional well-being, helping them develop resilience, better communication skills, and a positive self-image. Research by [Joyce L. Epstein \(1995\)](#) on school-family-community partnerships indicates that students with strong family engagement experience better emotional health, demonstrating more positive attitudes toward school and better behavior in class. Family support is key in developing resilience and emotional intelligence.
3. **Increased Attendance and Motivation:** When families are engaged, students are more motivated to attend school and participate actively. According to a 2014 study from the [National Center for Education Statistics](#), students with engaged families have higher attendance rates. The [Attendance Works](#) organization has shown that chronic absenteeism decreases when families are aware of and invested in their children's attendance and school success.
4. **Better Behavior:** Engaged families contribute to fewer behavioral problems in schools. Students feel supported both at home and in school, leading to improved attitudes and relationships with peers and teachers. The [Harvard Family Research Project](#) highlights that family engagement is associated with fewer behavioral issues. A meta-analysis by [S. Wilder \(2014\)](#) found that students with active family support display fewer disruptive behaviors, contributing to a more positive school climate and better peer interactions.

5. **Strong School-Community Relationships:** When families are engaged, schools benefit from a stronger sense of community. Family engagement promotes trust, collaboration, and shared responsibility for student success. [National PTA \(2009\)](#) emphasizes the role of family engagement in building strong school-community relationships. Schools with engaged families report greater collaboration, trust, and mutual respect between educators and families, leading to a more welcoming environment for students.
6. **Cultural Responsiveness:** Engaging families provides schools with better insights into the cultural backgrounds, needs, and strengths of students. This allows schools to tailor educational practices to be more inclusive and relevant to diverse communities. Research by [Ishimaru & Galloway \(2014\)](#) in the *Journal of Educational Change* points out that schools that foster culturally responsive family engagement help close achievement gaps. When educators engage families from diverse backgrounds, students feel more included, which enhances their educational experiences.
7. **Empowerment of Families:** Family engagement empowers parents and caregivers to be advocates for their children's education. It encourages them to take an active role in decision-making, leading to a more democratic and inclusive school environment. [Susan Auerbach \(2009\)](#), in her work on family engagement in urban schools, found that empowering parents through engagement programs not only supports student success but also enables families to participate in decision-making processes. This leads to more equitable and inclusive school environments.

## The Link Between Family Engagement and School Performance

Family engagement is one of the key characteristics of high-performing schools because it directly contributes to improved student outcomes. Schools that excel academically often view families as crucial partners in the educational process, and they intentionally develop strategies that align family engagement with their academic goals. This integration of family engagement into the school's core practices is more than just a supportive activity—it becomes a deliberate, strategic approach to fostering student success. These schools:



- **Set Clear Objectives:** They identify academic goals such as improving reading proficiency, boosting math scores, or increasing graduation rates and then design family engagement initiatives that support these specific targets. For example, schools may offer workshops that train parents in helping their children with homework, or they may send home learning resources that align with classroom instruction.
- **Two-Way Communication:** Schools maintain open lines of communication with families, ensuring that parents understand academic expectations and are kept informed about their children's progress. Effective communication builds trust and empowers families to take an active role in supporting their children's education.
- **Data-Driven Engagement:** By using data to inform decisions, schools can tailor their family engagement practices to meet the needs of their students. For example, schools may analyze attendance data to develop targeted outreach for families of students with chronic absenteeism, or they may use assessment results to inform parents about how they can help their children improve in specific academic areas.



## Family Engagement in School Improvement Plans

High-performing schools also embed family engagement in their **school improvement plans**, ensuring that it is a long-term, sustainable practice. This requires a structured approach:

- **Collaborative Goal Setting:** Family members are included in the process of setting school improvement goals. This fosters a sense of shared responsibility and makes families feel like valued contributors to the school's vision and mission.
- **Training and Resources:** Schools invest in providing professional development for teachers and staff on effective family engagement strategies. They may also offer parents resources and training to help them understand how they can support academic goals at home.
- **Continuous Evaluation:** Schools regularly assess the effectiveness of their family engagement strategies, making adjustments as necessary to ensure they are having a positive impact on student achievement. By treating family engagement as a dynamic and evolving process, schools ensure that these efforts remain relevant and impactful.

The importance of family engagement in school improvement plans is further supported by research. [Shannon & Bylsma \(2007\)](#) emphasized that schools with strong family engagement frameworks were able to consistently link these efforts to academic gains. They found that successful schools did not treat family engagement as a “one-size-fits-all” strategy but adapted their approaches to the needs of their particular student populations. By making it a deliberate part of their academic strategy and school improvement efforts, they ensure that students have the comprehensive support needed to achieve their full potential.

Family engagement is crucial for student success, as it positively impacts academic performance, social-emotional development, and overall school improvement. Research shows that when families are engaged in their children’s education, students achieve higher grades, attend school more regularly, and are more likely to graduate. Family engagement is a partnership that enhances learning, promotes equity, and contributes to student success both in and out of the classroom.



[Click here](#) for more on the impact of family engagement.

## Parental Involvement Versus Family Engagement



The distinction between parental involvement and family engagement is crucial. Parental involvement tends to focus on activities initiated by the school, often with limited two-way interaction. On the other hand, family engagement emphasizes a collaborative approach where educators, families, and the community work together as equal partners. Family engagement can foster deeper relationships, shared responsibility, and a holistic approach to a child's learning and development. To expand on the distinction between parental involvement and family engagement, let’s explore some key differences:

Parental Involvement typically includes activities initiated by the school or teacher, where parents participate but have limited decision-making power. Examples may include:

- Attending parent-teacher conferences
- Helping with school-organized fundraisers or bake sales
- Monitoring homework and making sure it is completed
- Joining school events like plays or sports activities

Family Engagement focuses on collaboration, where families, educators, and communities work together to support children’s education. This approach empowers families to play an active role. Examples could include:

- Co-creating learning goals for children with teachers
- Hosting community meetings to identify collective educational strategies
- Participating in curriculum design or decision-making processes at school
- Sharing cultural experiences that enrich school activities and teaching

ASPECT	PARENTAL INVOLVEMENT	FAMILY ENGAGEMENT
		
<b>Definition</b>	Parents' participation in school-related activities	Collaborative partnership between families and schools
<b>Focus</b>	School-centric activities and tasks	Holistic approach focusing on child’s overall well-being
<b>Interactions</b>	Often one-way (school to parent)	Two-way (dialogue and collaboration)
<b>Examples</b>	Attending parent-teacher conferences, helping with homework	Participating in decision-making, contributing to school policies
<b>Goal</b>	Support school’s goals and procedures	Build mutual trust and respect, support child’s development
<b>Level of Engagement</b>	May occur periodically or be focused on specific tasks	Ongoing, integrated into daily routines
<b>Impact on Child</b>	May improve academic performance	Can enhance emotional, social, and academic outcomes

Research also indicates that family engagement has a more substantial impact on student achievement and academic success whereas parental involvement has been shown to have limited effects. Parental Involvement is often transactional and doesn’t engage parents in a meaningful way. Parents may not feel as connected to the educational process, which can limit their ability to influence positive outcomes for their children. Family Engagement, on the other hand,

- Promotes a shared vision for student learning.
- Encourages deeper, ongoing communication between educators and families.
- Fosters cultural relevance in the learning environment, making education more meaningful for students from diverse backgrounds.
- Boosts students’ confidence and motivation as they see their families and educators working together.

## Strategies to Shift from Parental Involvement to Family Engagement

Shifting from parental involvement to family engagement requires intentional strategies to foster partnerships:

- **A Strengths-Based Approach:** Acknowledge the strengths of families first, respect and learn from differences, show openness to adapting practice based on family preferences, and approach families as equal and reciprocal partners in support of their child. Adopting and using a strengths-based approach allows us to positively build trusting relationships with families and shows families that we want to work together (Office of Head Start, 2018).
- **Invite Parents into the Decision-Making Process:** Involve families in curriculum discussions or school governance. Create committees where parents can offer input on school policies or curriculum.
- **Offer Culturally Responsive Engagement:** Understand the cultural backgrounds of the families in your school and create opportunities for them to share their experiences and knowledge. This could be through family workshops, cultural nights, or integrating family stories into learning.
- **Create Two-Way Communication Channels:** Move beyond parent-teacher conferences to regular, ongoing communication. Use newsletters, emails, text messages, or digital platforms that encourage dialogue, rather than just sending information.
- **Build Trust Through Home Visits or Community-Based Learning:** Teachers can make visits to families or community centers, creating stronger relationships outside the school setting. This shows families that educators are genuinely interested in learning about their lives and context.
- **Train Educators in Family Engagement:** Schools should provide professional development to staff about family engagement practices. This ensures teachers have the skills to engage in meaningful collaboration with families.

As an example, a school traditionally hosted parent-teacher conferences once a semester and relied on report cards and school events to interact with families to promote parent involvement. To make the shift to family engagement, the school-initiated family workshops where parents, students, and teachers collaborated on setting academic goals and discussed how learning could continue at home. They also established monthly "community circles," where families could discuss challenges and opportunities within the school. This shift helped the school improve student attendance, engagement, and performance. By emphasizing the importance of family engagement over traditional parental involvement, the school can foster more meaningful relationships with families, ultimately benefiting students' academic and personal growth.



# Nevada's Family Engagement Framework: Birth Through Grade 12

The Nevada Department of Education's (NDE) *Family Engagement Framework: Birth through Grade 12* (*Framework*) was created to guide families, schools, districts, educators, and community members in their family engagement efforts (NRS 385.635). It was developed and informed by Nevada **families**<sup>1</sup>, **educators**<sup>2</sup>, and **community members**<sup>3</sup>. The Framework Advisory Committee (Committee), consisting of family engagement experts and advocates from across the state, supported NDE in developing the *Framework*. Nevada families, educators, and community members also provided NDE and the Committee feedback on the *Framework* through written feedback and surveys.

The *Framework* was based on best practices from national and state organizations, research, and Committee members' expertise. The *Framework* was not developed as a script for family engagement efforts, but rather as a guide for schools, districts, educators, and communities to strengthen and fortify the family engagement strategies they may have already had in place to fit and best serve their communities. The *Framework* was designed as a living document, intended for continual updates to reflect the latest family engagement strategies, practices, and research. The *Framework* was first updated in 2021 to provide essential resources for districts, schools, educators, and community members to engage and support students and families effectively and equitably amid the unprecedented challenges posed by the COVID-19 pandemic.

The Framework is being updated again to continue serving as a vital resource for enhancing family engagement and supporting children's learning and development in today's educational landscape. Changes in educational policies and standards in Nevada further underscore the importance of aligning both the *Framework* and the *Toolkit* with current regulations and expectations. As education systems and student needs evolve, it's vital to refresh the included *Toolkit* to incorporate the latest research, best practices, and emerging trends in family engagement. Rapid advancements in technology also necessitate updates to include new tools and platforms for better family engagement. Additionally, shifts in community dynamics and family structures highlight the need for a *Toolkit* that remains relevant and responsive to diverse family needs. Finally, incorporating feedback from previous iterations facilitates continuous improvement and refinement of both the *Framework* and the *Toolkit*.

## The Goal of the Framework

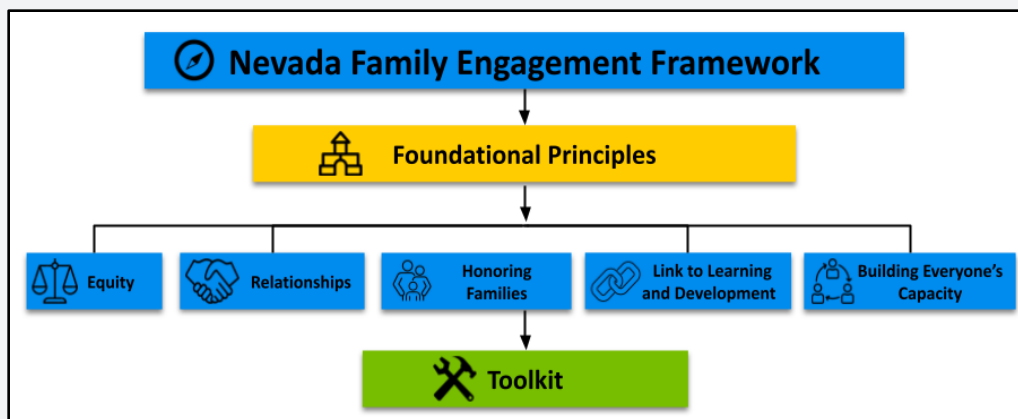
The goal of the *Framework* is to create a shared understanding and approach to family engagement in Nevada from birth through grade 12. This will result in family engagement playing a greater role in a child's learning and development throughout the state in our efforts to improve children's outcomes. The *Framework* is built around five Foundational Principles—essential values and beliefs that guide the family engagement practices and strategies detailed in the accompanying *Toolkit*:

1. [Equity](#)
2. [Relationships](#)
3. [Honoring Families](#)
4. [Link to Learning and Development](#)
5. [Building Everyone's Capacity](#)

<sup>1</sup> Families: any caregiver who takes primary or shared responsibility for raising a child, regardless of biological relationship

<sup>2</sup> Educator: refers to in-school and out-of-school staff providing instruction and support to students

<sup>3</sup> Community member: a member of the community and/or community organization



These Foundational Principles are based on stakeholder input, grounded in research, and aligned with other family engagement frameworks like the [Dual Capacity-Building Framework for Family-School Partnerships](#). The aim is for schools, districts, educators, communities, and families involved in a child's learning to apply these principles in their family engagement planning and initiatives. The included *Toolkit* provides valuable resources to help strengthen their family engagement practices.

## The Five Foundational Principles



### Foundational Principle #1: Equity

**Equity**<sup>4</sup> refers to providing each individual or group with the resources, opportunities, and support they need to succeed based on their unique circumstances. Unlike equality, which treats everyone the same, equity recognizes that different students and families have different needs, and it adjusts approaches and resources accordingly to ensure everyone has a fair chance to achieve success. Equity is a foundational principle for family engagement because it ensures that all families, regardless of their unique circumstances, have the opportunity to actively participate in their child's education. Equitable educational opportunities involve addressing the diverse social and educational needs of both students and their families.

This is where an effective Multi-Tiered System of Supports (MTSS) becomes crucial. MTSS provides a structured framework to ensure all students and families receive the support they need for success. It helps schools implement strategies that address the barriers some families face, such as work schedules or language differences. For example, if a school only schedules events during traditional working hours or fails to provide communication in multiple languages, certain families may be unintentionally excluded. MTSS guides schools to address these issues, ensuring that family engagement efforts are equitable and inclusive. By integrating equity into MTSS, schools can create systems that enable all families to participate meaningfully in their child's learning process.

This approach strengthens the partnership between schools and families, leading to better student outcomes and more supportive learning environments. Equity in family engagement, therefore, is not just about fairness; it is about making sure every family has the tools, support, and opportunities they need to contribute to their child's success.

<sup>4</sup>Equity: The learning needs of every student are supported in an environment where all students are valued, respected, and see themselves in their curriculum and instructional materials while experiencing academic success without regard to differences in age, gender, socio-economic status, religion, race, ethnicity, sexual orientation, ability, native language, national origin, or citizenship status (NDE definition from the [2020 Statewide Plan for the Improvement of Pupils](#))



The figure above shows NDE’s seven core elements of MTSS (can also be found in Nevada’s [Framework for Equitable Integrated System of Student Supports](#)).



## Foundational Principle #2: Relationships

Relationships are a foundational principle for family engagement because they form the basis of trust, respect, and understanding between families and educators, which is crucial for creating meaningful partnerships. Building these relationships requires intentional effort and allows families and educators to learn about each other, share experiences, and collaborate in supporting students. When relationships are genuine and based on mutual respect, they help families feel more confident in working with schools, especially those who might otherwise feel hesitant due to their own educational background or negative school experiences. By making consistent efforts to connect with families, schools can break down these barriers, ensuring families feel included and valued in the educational process. Furthermore, building authentic relationships helps to bridge divides related to differences in age, gender, socio-economic status, race, ethnicity, and other factors. These relationships provide an opportunity for educators to recognize and address **implicit biases**<sup>5</sup>, which can negatively affect interactions with families and contribute to **opportunity gaps**<sup>6</sup> for marginalized groups. By fostering strong relationships, educators can counteract these biases, build trust, and create inclusive environments where all families are welcomed as equal partners in their child's education. In essence, relationships are the gateway to understanding, trust, and collaboration between schools and families, which are all necessary for meaningful family engagement that supports student success.

<sup>5</sup> Implicit bias: attitudes or stereotypes toward others that unconsciously affect our understanding, actions, and decisions toward others

<sup>6</sup> Opportunity gaps: ways in which race/ ethnicity, socioeconomic status, English proficiency, community wealth, familial status, or other factors contribute to or perpetuate lower educational aspirations, achievement, and attainment for certain students



### Foundational Principle #3: Honoring Families

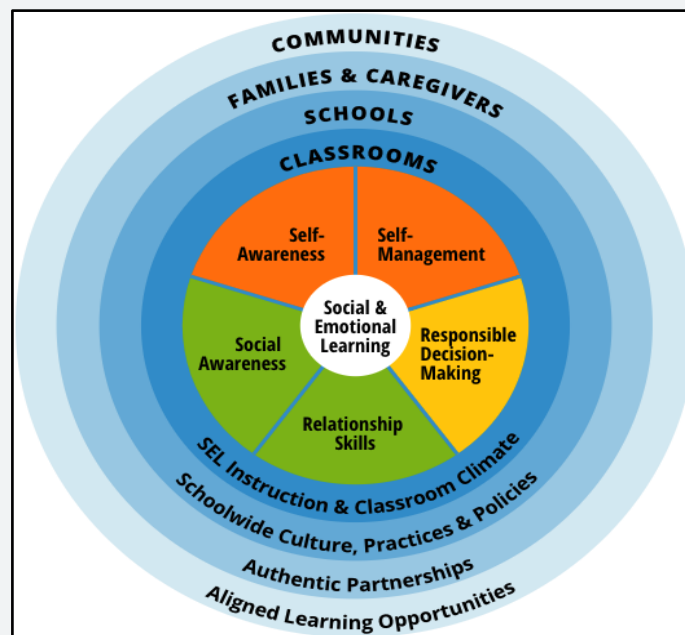
Honoring families acknowledges the vital role families play in their child's learning and development. Families are a child's first teachers and are experts on their child's strengths. By recognizing and valuing the knowledge, skills, and forms of engagement that families bring, educators can create stronger, more effective partnerships that support student success. Honoring families means understanding that their contributions are essential, regardless of their age, socio-economic status, race, ethnicity, or any other identity factor. When schools actively honor and validate the "funds of knowledge" families possess, they reinforce the idea that every family has the ability to positively influence their child's education. This recognition not only empowers families but also encourages them to become more involved in their child's learning process, knowing that educators respect and value their insights and experiences. Incorporating families' knowledge into the educational process helps build trust and collaboration. By making it clear that their contributions are a valuable asset, schools strengthen the family-school partnership, which is critical for fostering an environment where children can thrive academically and developmentally.



### Foundational Principle #4: Link to Learning and Development

Linking family engagement to learning and development ensures that the efforts made by families and schools are directly aligned with the child's academic, social, and emotional growth. Family engagement practices should be connected to the child's learning and development goals, as well as the school's or district's social, emotional, and academic development (SEAD) objectives. When family engagement is purposefully linked to these goals, it creates a unified approach that supports the **whole child**<sup>7</sup>—academically, emotionally, physically, and socially.

#### [CASEL Wheel](#)



<sup>7</sup> Whole child: Consideration of the whole child transitions focus from narrowly defined academic achievement to one that promotes long-term development of each child through a healthy lifestyle, physical and emotional safety, connections with school and the broader community, support from adults, as well as academic preparation for success in college and career.

By aligning family engagement strategies with learning goals, families and educators are better able to collaborate as partners in the child's development. Research shows that when families are engaged in this way, they can reinforce SEAD skills at home, which in turn enhances the child's overall development and academic success. Family engagement events become more meaningful when they are focused on helping families understand what their child needs to know and be able to do, as this fosters a sense of shared responsibility between families, educators, and the broader community in supporting the child's growth. Additionally, linking family engagement to learning and development encourages families and educators to participate more actively, as they can see the tangible benefits of working together to support the child's holistic development. This connection makes family engagement strategies more impactful, ensuring that they are not just about participation but about making real contributions to the child's cognitive, emotional, and social progress. In essence, linking family engagement to learning and development is foundational because it ensures that engagement efforts are intentional, purposeful, and aligned with the child's success, creating a collaborative partnership that supports the whole child.



### **Foundational Principle #5: Building Everyone's Capacity**

Building everyone's capacity is a foundational principle for family engagement because it recognizes that both families and educators need ongoing development to effectively collaborate and support student success. Strengthening family engagement requires enhancing the knowledge and skills of everyone involved - families and educators alike. This mutual growth leads to more effective partnerships, where both groups are equipped to work together in meaningful ways. Importantly, this principle acknowledges that families already have strengths and knowledge to contribute. Instead of viewing families as passive recipients of support or in need of help, the focus is on building upon their existing capabilities. By providing opportunities for families to grow through workshops, training, and family engagement activities, schools can empower them to better support their children's learning. Likewise, educators must also develop their capacity to engage families effectively. Through professional development, educators can learn strategies for building stronger connections with families, improving communication, and fostering inclusive environments. Just as students are expected to continually learn and improve, adults in the education system must also evolve in their ability to engage families. In short, building stakeholders' capacity creates a continuous learning environment where families and educators grow together, resulting in stronger, more effective family-school partnerships that benefit student development.



The *Framework* also contains a *Toolkit*, which has recommended family engagement practices and strategies that align with the [Parent-Teacher Association's \(PTA\) National Standards for Family-School Partnerships](#), which were adopted by the Nevada State Board of Education in 2015 as a part of its [Nevada Policy of Parental Involvement and Family Engagement](#), and the [Nevada Educator Performance Framework's](#) family engagement standard. The *Toolkit* will be consistently updated to reflect the most up-to-date family engagement best practices and strategies.



## Everyone Plays a Role

Family engagement involves the collective effort of various stakeholders, including state agencies, districts, schools, early childhood programs, community members, and families. According to the U.S. Department of Health and Human Services and the U.S. Department of Education (2016), family engagement requires a systematic, collaborative approach where everyone works together to improve child outcomes.

A helpful analogy compares family engagement to building a house. Just as a successful house construction requires different experts—architects, builders, electricians, and plumbers—working together with a clear plan, a child's education relies on the collaboration of various stakeholders. The family serves as the foundation, providing stability and support, while schools act as the framework, guiding academic and social development. Community members contribute additional resources and opportunities, like specialists adding finishing touches. Without each party doing their part, the structure would be incomplete. By working together and regularly checking in on progress, families, schools, and communities can ensure the child's educational experience is strong and resilient, providing the foundation for future success.



By maintaining consistent collaboration, as highlighted by the [FrameWorks Institute \(2019\)](#), students are more likely to reach their academic and personal goals. This shared responsibility ensures that the entire community contributes to fostering an environment in which children thrive both academically and personally.

The following pages are the Toolkit, a collection of resources aligned with the Parent Teacher Association's National Standards for Family-School Partnerships. These standards, adopted by the Nevada State Board of Education as part of the Nevada Policy on Parental Involvement and Family Engagement, emphasize that family engagement is a shared responsibility. To enhance usability, the resources have been thoughtfully organized by specific stakeholder groups, reinforcing that everyone—families and caregivers, educators and school staff, and community and partner organizations—plays a vital role in fostering meaningful family engagement.